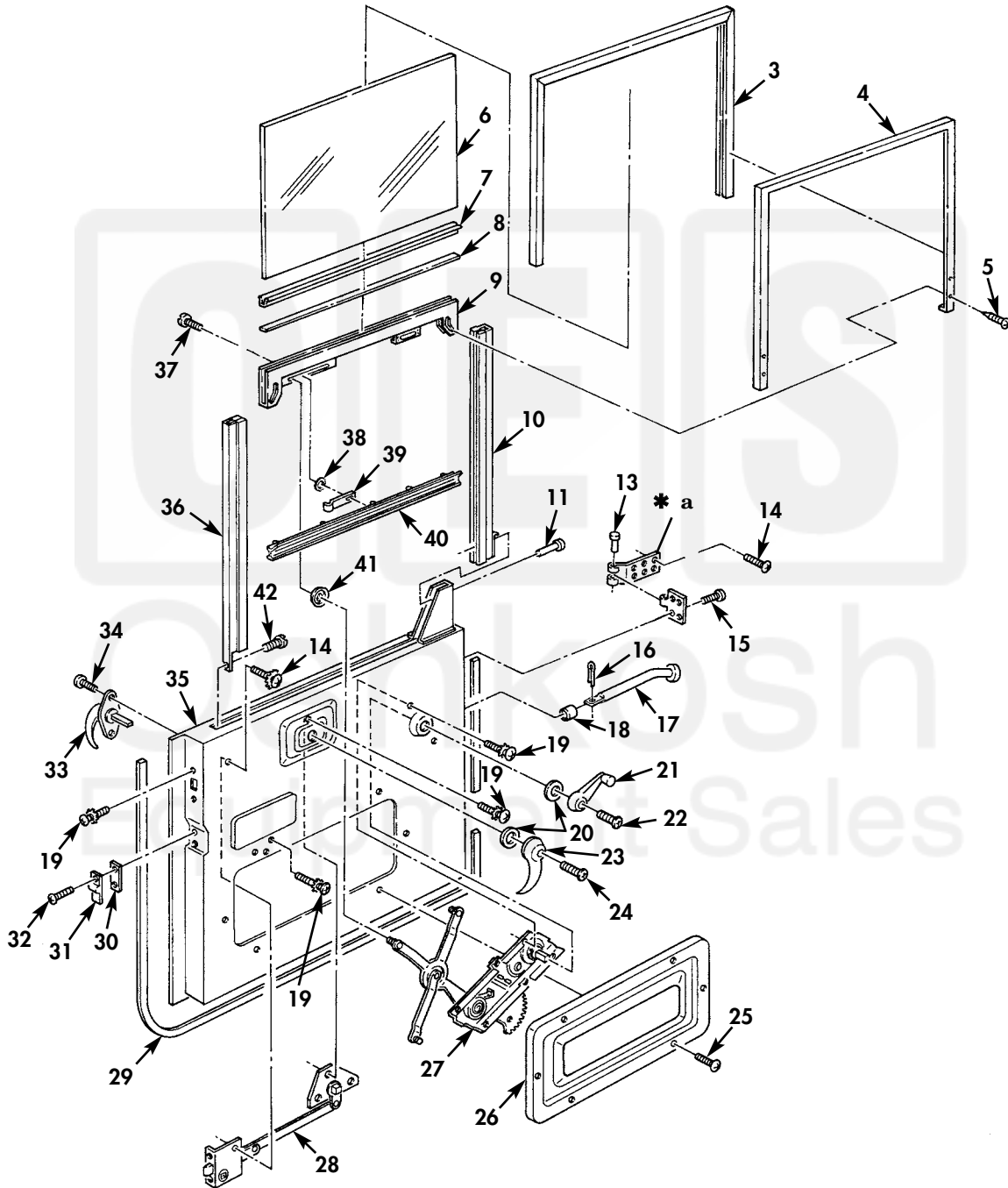
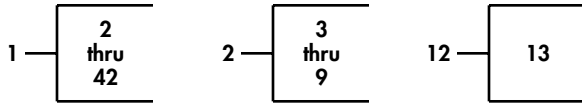


FIELD AND SUSTAINMENT MAINTENANCE  
REPAIR PARTS AND SPECIAL TOOLS LIST

TRUCK, CARGO: 2-1/2-TON, 6X6, M44A2 SERIES TRUCKS (MULTIFUEL)



\* a PART OF ITEM 12

Figure 107. Door and Window Assembly.

(1) ITEM NO	(2) SMR CODE	(3) NSN	(4) CAGEC	(5) PART NUMBER	(6) DESCRIPTION AND USABLE ON CODE (UOC)	(7) QTY
					GROUP 18 BODY,CAB,AND HOOD 1801 BODY,CAB,AND HOOD	
					FIG. 107 DOOR AND WINDOW ASSEMBLY	
1	PAOOO	2510-00-737-3294	19207	7373294	DOOR,VEHICULAR R.H.....	1
1	PAOOO	2510-00-737-3293	19207	7373293	DOOR,VEHICULAR L.H.....	1
2	PAOFF	2510-00-650-1015	19207	7529305	.FRAME,STRUCTURAL,VE R.H.....	1
2	PAOFF	2510-00-674-4487	72286	B410-1L	.FRAME,STRUCTURAL,VE L.H.....	1
3	PAFZZ	9390-00-737-3300	19207	7373300	..NONMETALLIC CHANNEL.....	1
4	PAFZZ	2510-00-737-3295	19207	7373295	..FRAME,WINDOW,VEHICU.....	2
5	PAFZZ	5305-00-057-7164	96906	MS24615-24	..SCREW,TAPPING.....	4
6	PAFZZ	9340-01-047-4100	19207	7529307	..GLASS,LAMINATED.....	1
7	PAFZZ	9390-00-737-3301	19207	7373301	..NONMETALLIC CHANNEL.....	1
8	PAFZZ	2510-00-179-5708	19207	10906350	..FILLER,CAB DOOR.....	1
9	PAFZZ	2540-00-737-3296	19207	7373296	..CHANNEL,LIFT,VEHICL L.H.....	1
9	PAFZZ	2540-00-737-3297	19207	7373297	..CHANNEL,LIFT,VEHICL R.H.....	1
10	PFOZZ	2540-00-737-3298	16662	7373298	.CHANNEL,LIFT,VEHICL.....	2
11	PAOZZ	5320-00-262-6492	11083	7B5049	.RIVET,TUBULAR.....	2
12	PFOZZ	5340-00-737-3285	19207	7373285	.HINGE,BUTT.....	4
13	PAOZZ	5315-00-338-1621	19207	7539131	..PIN,STRAIGHT,HEADED.....	1
14	PAOZZ	5305-00-078-7021	19207	8743911	.SCREW,CAP,SOCKET HE.....	16
15	PAOZZ	5305-00-144-1514	19207	8743917	.SCREW,MACHINE.....	16
16	PAOZZ	5315-00-059-0205	80205	MS24665-490	.PIN,COTTER.....	2
17	PAOZZ	2510-01-084-9633	19207	8757842-1	.ROD,DOOR CHECK,VEHI.....	2
18	PAOZZ	2510-00-057-1630	19207	8757843	.PAD,DOOR CHECK.....	2
19	PAOZZ	5305-01-242-5953	24617	455176	.SCREW,ASSEMBLED WAS.....	32
20	PAOZZ	5330-00-621-2565	19207	7397852	.GASKET.....	4
21	PAOZZ	2540-00-737-3304	19207	7975607	.HANDLE,WINDOW REGUL.....	2
22	PAOZZ	5305-00-145-0602	19207	8743910	.SCREW,CAP,SOCKET HE.....	2
23	PAOZZ	2540-00-797-5609	19207	7975609	.HANDLE,DOOR,VEHICUL.....	2
24	PAOZZ	5305-00-088-1302	19207	8743909	.SCREW,CAP,SOCKET HE.....	2
25	PAOZZ	5305-00-855-0961	80205	MS24629-35	.SCREW,TAPPING.....	12
26	PFOZZ	5340-00-693-0604	19207	7373299	.COVER,ACCESS.....	2
27	PFOZZ	2540-00-693-0602	19207	7373289	.REGULATOR,VEHICLE W L.H.....	1
27	PFOZZ	2540-00-693-0603	89346	101081R91	.REGULATOR,VEHICLE W R.H.....	1
28	PAOZZ	2540-00-737-3276	19207	7373276	.LATCH,DOOR,VEHICULA L.H.....	1
28	PAOZZ	2540-00-737-3277	19207	7373277	.LATCH,DOOR,VEHICULA R.H.....	1
29	PAOZZ	9390-01-285-9623	19207	12368265	.NONMETALLIC SPECIAL.....	2
30	PAOZZ	5365-01-129-0399	19207	7529300	.SPACER,PLATE.....	2
31	PAOZZ	2540-00-040-2129	19207	8329899	.WEDGE,DOOR DOVETAIL.....	2
32	PAOZZ	5305-00-696-5285	24617	187995	.SCREW,ASSEMBLED WAS.....	1
33	PFOZZ	2540-00-741-0715	19207	7410715	.HANDLE,DOOR,VEHICUL.....	2
34	PAOZZ	5305-00-483-2339	26233	M34AS1032R12C	.SCREW,CAP,SOCKET HE.....	4
35	XAOZZ		19207	7397674	.DOOR,VEHICULAR R.H.....	1
35	PAOZZ	2510-00-737-3293	19207	7373293	.DOOR,VEHICULAR L.H.....	1
36	PFOZZ	2540-00-737-3286	19207	7373286	.CHANNEL,LIFT,VEHICL.....	2
37	PAOZZ	5305-00-995-3569	96906	MS24629-22	.SCREW,TAPPING.....	2
38	PAOZZ	5310-00-209-0788	96906	MS35335-30	.WASHER,LOCK.....	4
39	PAOZZ	2510-01-022-5783	19207	11682321	.BRACKET,CAB DOOR.....	1
40	PAOZZ	2510-00-737-3287	19207	7373287	.WEATHERSTRIP.....	2
41	PAOZZ	2540-00-562-0422	19207	7529309	.FASTENER,REGULATOR.....	4
42	PAOZZ	5305-00-442-3217	80205	MS24629-66	.SCREW,TAPPING.....	2

END OF FIGURE